



Colour & Texture Fusion |



IMMERSIVE / RESTORATIVE / TRANSLUCENT

RESTORATIVE in sage / installed in brick

COLOUR & TEXTURE FUSION



COLOUR & TEXTURE FUSION MERGES
PERFORMANCE AND SUSTAINABILITY WITH
DESIGN FLEXIBILITY IN EASY-TO-COORDINATE
STYLES AND COLORWAYS.

IMMERSIVE in river /
installation in monolithic





COLOUR & TEXTURE FUSION

IN A SOOTHING BIOPHILIC INSPIRED PALETTE,
COLORS BLEND TOGETHER TO CREATE
MOVEMENT WITH TEXTURAL DEPTH BRINGING
COMFORT AND WARMTH TO ANY SPACE.



RESTORATIVE in glaze and earth /
installation in brick

COLOUR & TEXTURE FUSION



TRANSLUCENT in sage and copper /
installation in monolithic





COLOUR & TEXTURE FUSION

LOW-WEIGHT AND
HIGH-PERFORMANCE
AT A CORE PRICE POINT,
**COLOUR & TEXTURE
FUSION** IS BACKED
WITH A LIMITED
LIFETIME WARRANTY
AGAINST STAIN,
COLORFASTNESS TO
LIGHT, STATIC AND
ABRASIVE WEAR FOR
MAXIMUM PERFORMANCE
AND APPEARANCE
RETENTION.

inside the design /

Constructed with EcoSolution Q® nylon and EcoWorx® backing, Colour & Texture Fusion is **Cradle to Cradle Certified® V.4 Silver** and can be recycled at the end of its useful life through our environmental guarantee.



EASY TO
COORDINATE



BIOPHILIC-
INSPIRED PALETTE



HIGH-PERFORMANCE
AT CORE PRICE POINT



RECYCLABLE +
RENEWABLE



PVC-FREE

COLOUR & TEXTURE FUSION

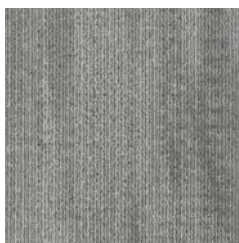
TRANSLUCENT in glaze, copper and blush /
installation in brick



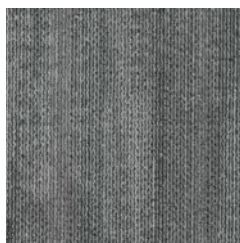
COLOUR & TEXTURE FUSION

IMMERSIVE in river, sage and earth / installation in brick

COLORWAYS I0625 | IMMERSIVE



00100 mist



00120 glaze



00130 fog



00150 clay



00300 sage



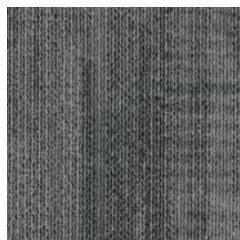
00400 sky



00450 river



00500 ash



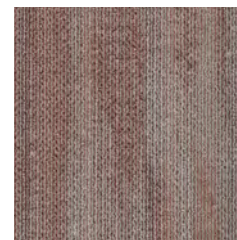
00550 smoke



00700 copper

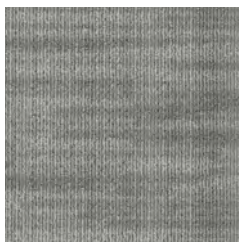


00750 earth

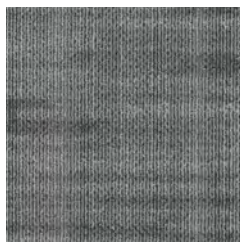


00800 blush

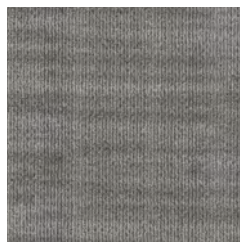
COLORWAYS 10626 | RESTORATIVE



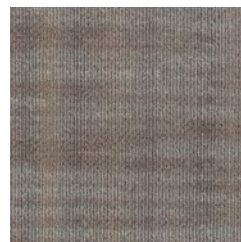
00100 mist



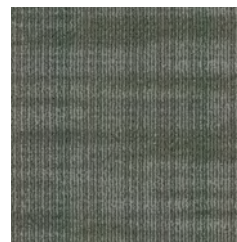
00120 glaze



00130 fog



00150 clay



00300 sage



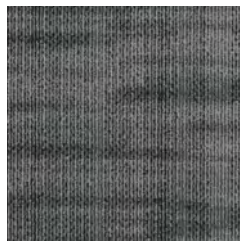
00400 sky



00450 river



00500 ash



00550 smoke



00700 copper

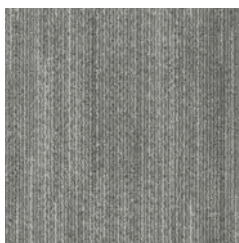


00750 earth

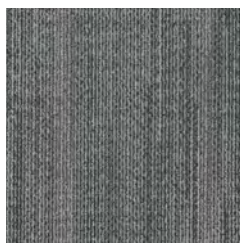


00800 blush

COLORWAYS 10627 | TRANSLUCENT



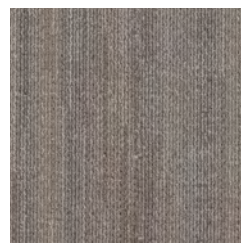
00100 mist



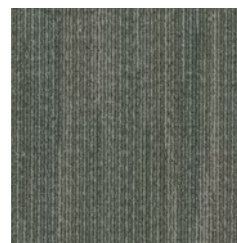
00120 glaze



00130 fog



00150 clay



00300 sage



00400 sky



00450 river



00500 ash



00550 smoke



00700 copper



00750 earth



00800 blush

COORDINATING PALETTE COOL BLUE

COLOUR & TEXTURE FUSION



- 1 IMMERSIVE I0625 in sky
- 2 RESTORATIVE I0626 in sky
- 3 TRANSLUCENT I0627 in sky
- 4 COLOR CHOICE I0203 in light taupe*
- 5 UNFOLD I0609 in stone
- 6 REACH I601V in integrate
- 7 IMPRESS I0606 in stone
- 8 HARRIS PI30T rug in balsa wood
- 9 INSET I577V in ice gold
- 10 ITERATE I638V in intention
- 11 PAINTED WEFT I483V in tapestry
- 12 BENJAMIN MOORE PAINT in Platinum Gray
- 13 BENJAMIN MOORE PAINT in Bella Blue

* Product swatches are meant to represent pattern & color, not the size & scale of product

COORDINATING PALETTE WARM COPPER/EARTH

COLOUR & TEXTURE FUSION



- 1 IMMERSIVE I0625 in earth
- 2 RESTORATIVE I0626 in earth
- 3 TRANSLUCENT I0627 in earth
- 4 COLOR CHOICE I0203 in coffee*
- 5 IMMERSIVE I0625 in copper
- 6 RESTORATIVE I0626 in copper
- 7 TRANSLUCENT I0627 in copper
- 8 COLOR CHOICE I0203 in grey metal*
- 9 LINOCUT I560V in mirror
- 10 MARK MAKING I509V in palette
- 11 DICHROIC I0544 in agate
- 12 BENJAMIN MOORE PAINT in Bittersweet Chocolate
- 13 BENJAMIN MOORE PAINT in Hazy Skies

* Product swatches are meant to represent pattern & color, not the size & scale of product



PRODUCT SPECIFICATIONS

COLOUR & TEXTURE FUSION

modular

IMMERSIVE

style / I0625

product size	24" x 24" 60.96 cm x 960.96 cm
gauge	1/10 39.37 per 10cm
tufted yarn weight	16 oz./yd ² 542.51 g/m ²
stitches	9.8 per inch 38.71 per 10 cm
fiber type	EcoSolution Q [®] Nylon
backing type	EcoWorx [®] Tile

RESTORATIVE

style / I0626

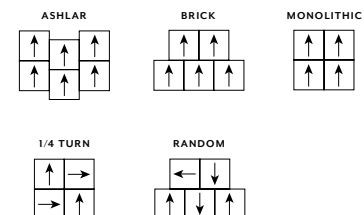
product size	24" x 24" 60.96 cm x 960.96 cm
gauge	1/10 39.37 per 10cm
tufted yarn weight	16 oz./yd ² 542.51 g/m ²
stitches	9.8 per inch 38.71 per 10 cm
fiber type	EcoSolution Q [®] Nylon
backing type	EcoWorx [®] Tile

TRANSLUCENT

style / I0627

product size	24" x 24" 60.96 cm x 960.96 cm
gauge	1/10 39.37 per 10cm
tufted yarn weight	16 oz./yd ² 542.51 g/m ²
stitches	9.8 per inch 38.71 per 10 cm
fiber type	EcoSolution Q [®] Nylon
backing type	EcoWorx [®] Tile

INSTALLATION METHODS



IMMERSIVE in sky / RESTORATIVE in fog
installed in random

For full specifications and color, please [visit this collection on the website.](#)