



Crafted Surface |



HEIRLOOM TWEED / OVERLAYER / TAPIS

HEIRLOOM TWEED + OVERLAYER in charcoal fringe / TAPIS in turkish teal / installation in herringbone

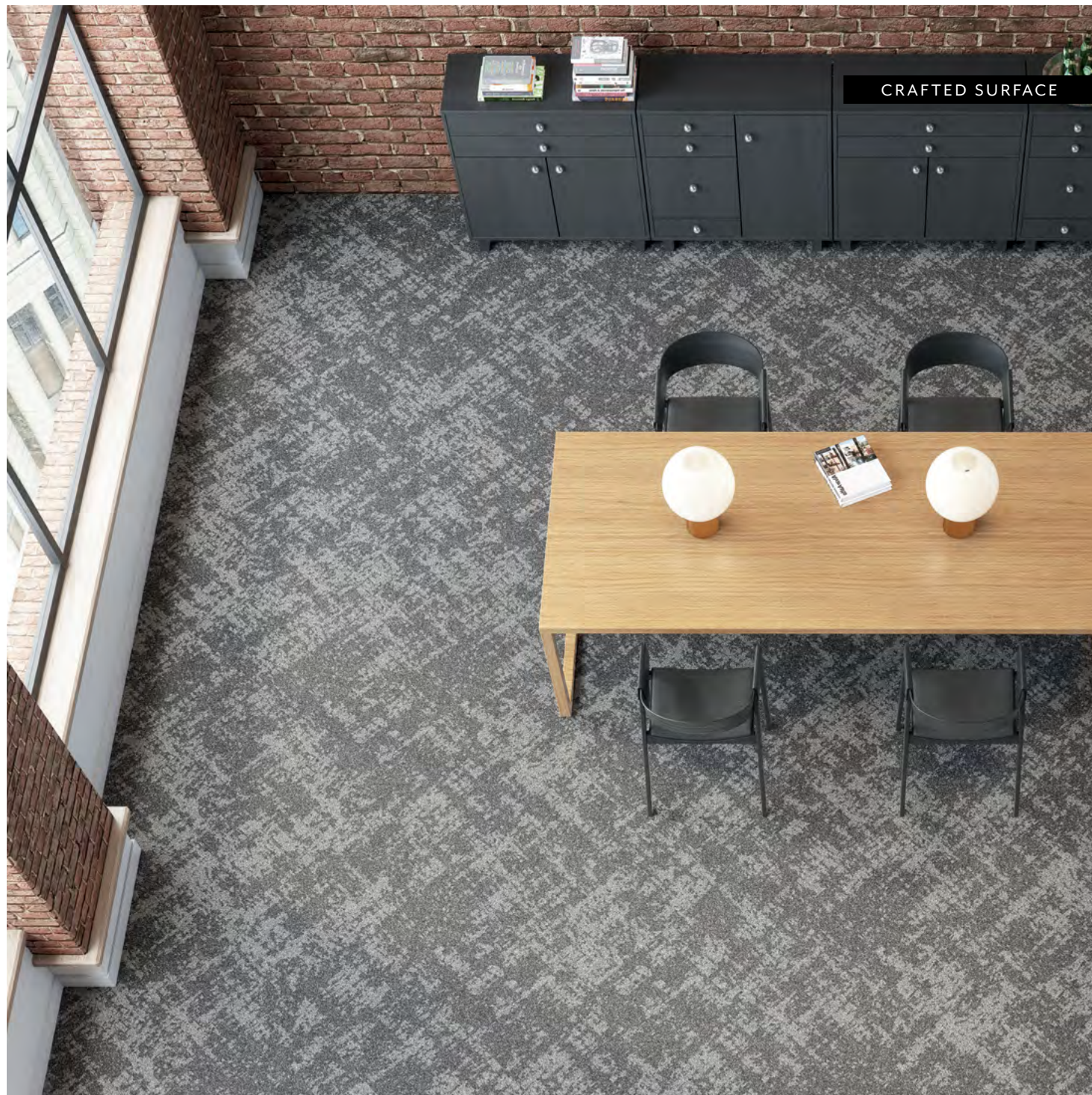


TAPIS in artisan emerald /
installation in monolithic

CRAFTED SURFACE



HEIRLOOM TWEED in charcoal fringe



CRAFTED SURFACE

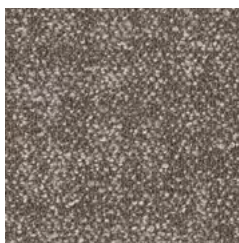
OVERLAYER in charcoal fringe /
installation in herringbone

CRAFTED SURFACE

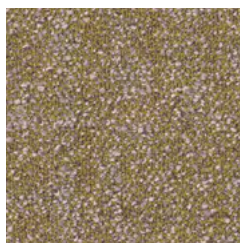


OVERLAYER in turkish teal / installation in stagger

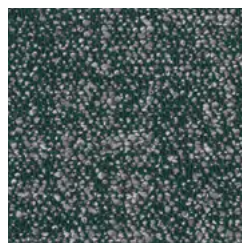
COLORWAYS 10549 | HEIRLOOM TWEED



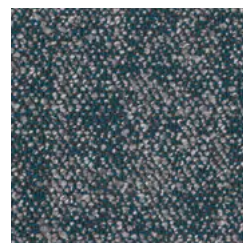
00150 antique beige



00280 yellow silk



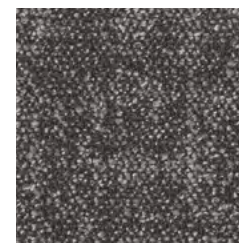
00350 artisan emerald



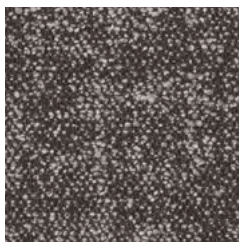
00430 turkish teal



00490 navy motif



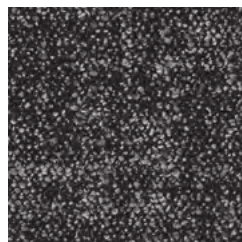
00530 shadow loop



00540 taupe tuff



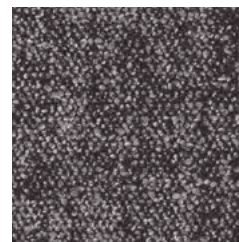
00570 charcoal fringe



00590 black wool



00620 rust wash



00770 sepia weave

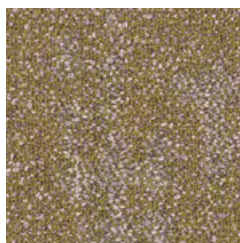


00790 vintage umber

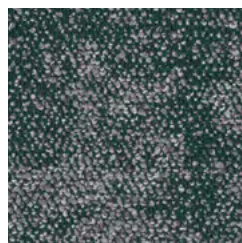
COLORWAYS 10550 | OVERLAYER



00150 antique beige



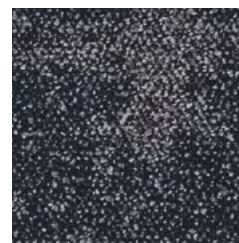
00280 yellow silk



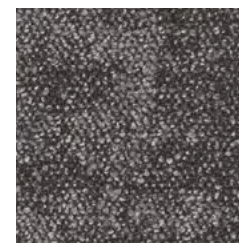
00350 artisan emerald



00430 turkish teal



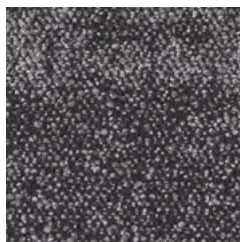
00490 navy motif



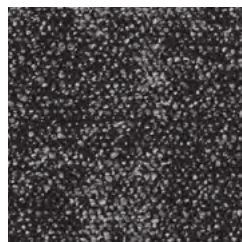
00530 shadow loop



00540 taupe tuff



00570 charcoal fringe



00590 black wool



00620 rust wash



00770 sepia weave

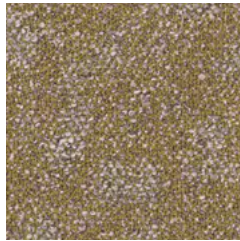


00790 vintage umber

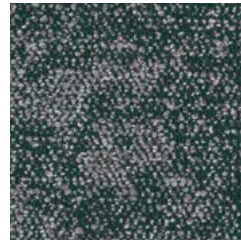
COLORWAYS I0551 | TAPIS



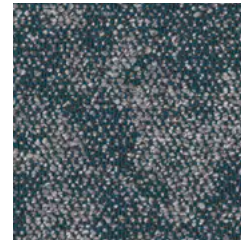
00150 antique beige



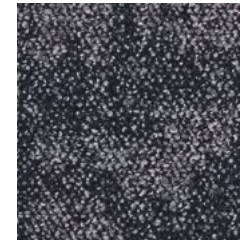
00280 yellow silk



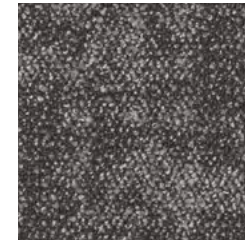
00350 artisan emerald



00430 turkish teal



00490 navy motif



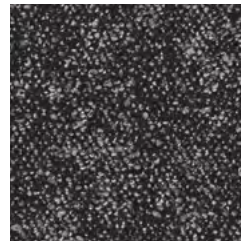
00530 shadow loop



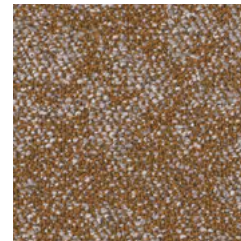
00540 taupe tuft



00570 charcoal fringe



00590 black wool



00620 rust wash



00770 sepia weave



00790 vintage umber

CARBON NEUTRAL

&

NEW ECOSOLUTION Q100™ YARN

+ ECOWORX® BACKING

= **LOWER, OVERALL EMBODIED
CARBON FOOTPRINT**





PRODUCT SPECIFICATIONS

CRAFTED SURFACE | modular

HEIRLOOM TWEED

style / 10549

product size	18 in x 36 in 45.72 cm x 91.44 cm
gauge	1/12 47.24 per 10 cm
tufted yarn weight	22 oz/yd ² 745.95 g/m ²
stitches	9.8 per inch 38.71 per 10 cm
fiber type	Eco Solution Q100™ Nylon
embodied GWP	4.9 kgCO ₂ e
backing type	EcoWorx® Tile

OVERLAYER

style / 10550

product size	18 in x 36 in 45.72 cm x 91.44 cm
gauge	1/12 47.24 per 10 cm
tufted yarn weight	22 oz/yd ² 745.95 g/m ²
stitches	9.8 per inch 38.71 per 10 cm
fiber type	Eco Solution Q100™ Nylon
embodied GWP	4.9 kgCO ₂ e
backing type	EcoWorx® Tile

TAPIS

style / 10551

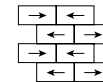
product size	18 in x 36 in 45.72 cm x 91.44 cm
gauge	1/12 47.24 per 10 cm
tufted yarn weight	22 oz/yd ² 745.95 g/m ²
stitches	9.8 per inch 38.71 per 10 cm
fiber type	Eco Solution Q100™ Nylon
embodied GWP	4.9 kgCO ₂ e
backing type	EcoWorx® Tile

INSTALLATION METHODS

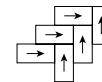
MONOLITHIC



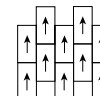
BRICK



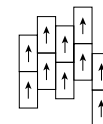
HERRINGBONE



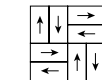
ASHLAR



STAGGER



BASKETWEAVE



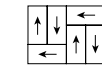
OFFSET



BOXED IN



HALF BASKETWEAVE



HEIRLOOM TWEED + OVERLAYER in charcoal fringe /
TAPIS in turkish teal / installation in herringbone

For full specifications and color, please [visit this collection on the website.](#)