

TRANSFORM SPACE



Artefact | **M**
MODULAR

PATINA / ETCHED / RELIC / REACT

RELIC in artfully rusted

LOOKBOOK

patcraft®



INSPIRED BY THE OXIDATION PROCESS OF DISCARDED ITEMS EXPOSED TO RUST AND WATER, ARTEFACT IS A STUNNING AND ORGANICALLY-FUSED COLLECTION THAT EXPLORES THE COURSE OF AGE AND WEATHERING – A WATERMARK LEFT WITHIN NATURE. NATURAL REACTIONS USING A RESIST-DYEING TECHNIQUE RESULT IN A VARIETY OF PATTERNS AND ORGANIC COLORS OF VARYING DEPTH, TINT AND SATURATION. EACH OF THE FOUR STYLES REVEAL A GRADUAL SHIFT IN SURFACE TEXTURE, EXPOSING THE HIDDEN STORIES OF OBJECTS WEATHERED BY TIME.



ARTEFACT

PATINA, ETCHED & REACT in artfully rusted

ARTEFACT



ETCHED in artfully rusted



PATINA in oxidized surface /
RELIC in artfully rusted

ARTEFACT



RELIC in artfully rusted



ETCHED and PATINA in artfully rusted



ARTEFACT



ETCHED in artfully rusted

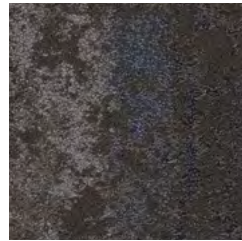
COLORWAYS 10511 | PATINA



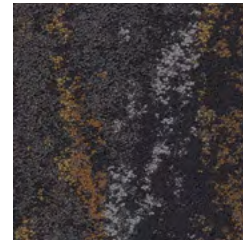
00175 earth hue



00200 mark of time



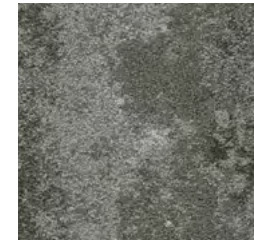
00450 watermark



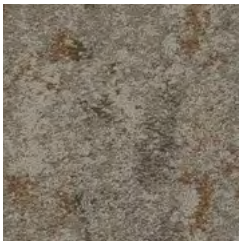
00480 underlying layer



00500 renewed element



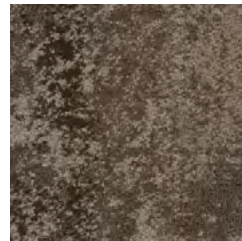
00510 oxidized surface



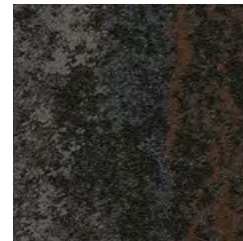
00525 artfully rusted



00530 metal trace



00540 industrial craft



00590 urban study

COLORWAYS 10512 | ETCHED



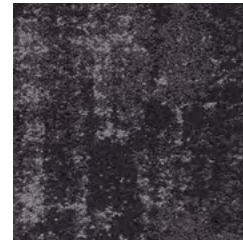
00175 earth hue



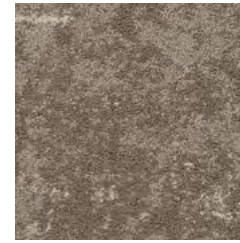
00200 mark of time



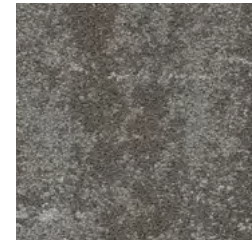
00450 watermark



00480 underlying layer



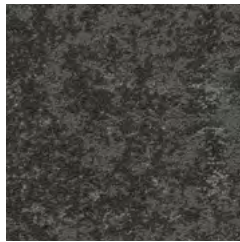
00500 renewed element



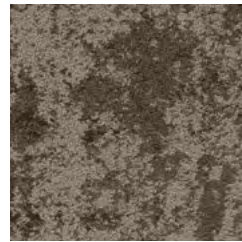
00510 oxidized surface



00525 artfully rusted



00530 metal trace



00540 industrial craft



00590 urban study

COLORWAYS 10513 | RELIC



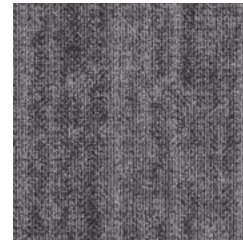
00175 earth hue



00200 mark of time



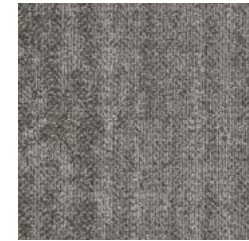
00450 watermark



00480 underlying layer



00500 renewed element



00510 oxidized surface



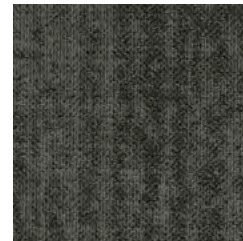
00525 artfully rusted



00530 metal trace



00540 industrial craft



00590 urban study

COLORWAYS 10514 | REACT



00175 earth hue



00200 mark of time



00450 watermark



00480 underlying layer



00500 renewed element



00510 oxidized surface



00525 artfully rusted



00530 metal trace



00540 industrial craft

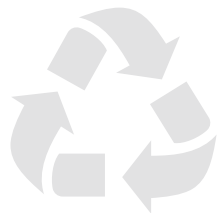


00590 urban study

CARBON NEUTRAL

&

NEW ECOSOLUTION Q100™ YARN
+ ECOWORX® BACKING
= **LOWER, OVERALL EMBODIED
CARBON FOOTPRINT**





PRODUCT SPECIFICATIONS

ARTEFACT | modular

PATINA | ETCHED

style / I0511 style / I0512

product size	12" x 48" 30.48 cm x 121.92 cm
gauge	1/10 39.4 per 10cm
tufted yarn weight	23 oz./yd ² 779.86 g/m ²
stitches	8.5 per inch 33.46 per 10 cm
fiber type	Eco Solution Q100™ Nylon
embodied GWP	5.0 kgCO ₂ e
backing type	EcoWorx® Tile

RELIC | REACT

style / I0513 style / I0514

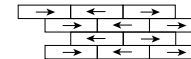
product size	12" x 48" 30.48 cm x 121.92 cm
gauge	1/12 47.24 per 10cm
tufted yarn weight	22 oz./yd ² 745.93 g/m ²
stitches	12 per inch 47.24 per 10 cm
fiber type	Eco Solution Q100™ Nylon
embodied GWP	4.9 kgCO ₂ e
backing type	EcoWorx® Tile

INSTALLATION METHODS

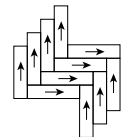
MONOLITHIC



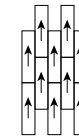
BRICK



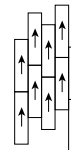
HERRINGBONE



ASHLAR



STAGGER



OFFSET

